



JACE'S CONSTRUCTION MATERIALS TRADING

#66 KARUHATAN RD. VALEZUELA CITY
METRO MANILA PHILLIPINES 1441

Contact Nos.: +63956 133 6365 / +63947 814 5863

Email Add.: info@jacescmt.com / alvinsegundo@jacescmt.com

Website: www.jacescmt.com Telephone Nos.: (02) 7257 1246



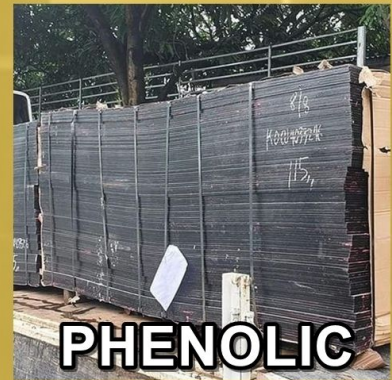
METAL FABRICATION



G.I. PIPE



H-FRAME



PHENOLIC BOARD



SHORING JACK



BASE JACK



G.I. TUBULAR

H-FRAME SET S20&S40

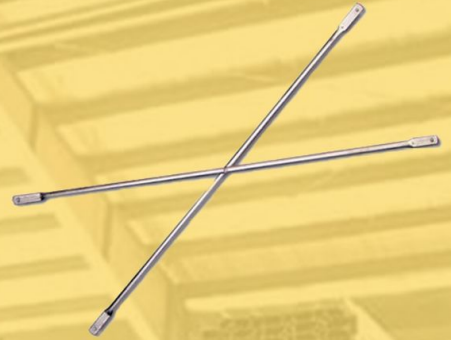


1.2X1.7M
1.2X1.2M
1.2X0.90M

JOINT PIN



CROSS BRACE



SHORING JACK S20&S40



3.4M
4.0M
4.5M
5.5M

BASE JACK



400MM
600MM

U HEAD

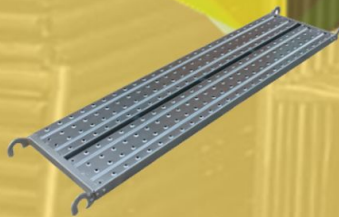


400MM
600MM

CASTER WHEEL



CATWALK



LADDER



TIE ROD



12MM 6M
17MM 3M

SWIVEL & FIXED CLAMP



FLANGE NUT



12MM
17MM

WING NUT



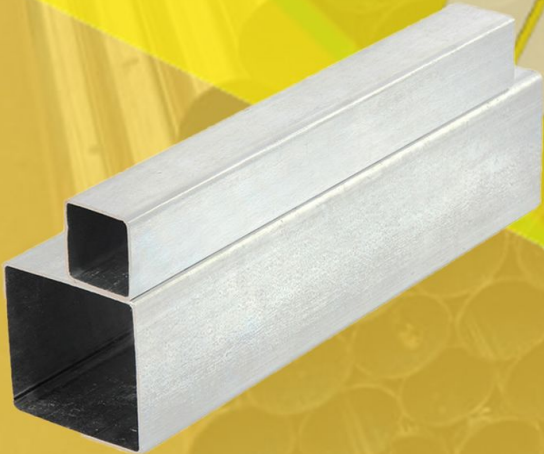
12MM
17MM

G.I. PIPE



1/2"	1.2MM	3.6KG
3/4"	1.2MM	4.5KG
1"	1.2MM	7KG
1 1/4"	1.2MM	8KG
1 1/4"	1.5MM	10.3KG
1 1/2"	1.2MM	9KG
1 1/2"	1.5MM	10.5KG
1 1/2"	1.8MM	12.5KG
1 1/2"	2MM	13.5KG
1 1/2"	2.3MM	16KG
2"	1.2MM	13.5KG
3"	1.2MM	26KG
3"	1.5MM	31KG
4"	1.2MM	33KG
4"	1.5MM	41KG

G.I. TUBULAR



3/4X3/4	1.2MM	3.2KG
3/4X3/4	1.5MM	4.2KG
1X1	1.2MM	4.2KG
1X1	1.5MM	5.2KG
1 1/2X1 1/2	1.2MM	6KG
1 1/2X1 1/2	1.5MM	8KG
1X2	1.2MM	6KG
1X2	1.5MM	8KG
1X3	1.2MM	8.5KG
1X3	1.5MM	10.5KG
2X2	1.2MM	8.5KG
2X2	1.5MM	10.5KG
2X3	1.2MM	10.5KG
2X3	1.5MM	13.5KG
2X4	1.2MM	12.5KG
2X4	1.5MM	14KG
2X6	1.2MM	19KG
2X6	1.5MM	21.5KG

PHENOLIC BOARD



CROCODILE	1/2"	10MM
	3/4"	16MM
MLIM, MONKEY- PHEONIX PLY	1/2"	12MM
	3/4"	18MM

PLYWOOD



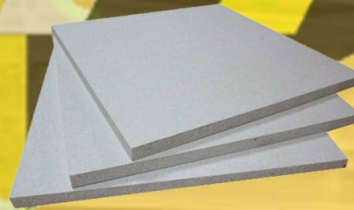
POLYWOOD ORDINARY (CHINA)	1/4"
	1/2"
	3/4"
PLYWOOD MARINE (CHINA)	1/4"
	1/2"
	3/4"
PLYBOARD (CHINA)	3/4"
LOCAL PLYWOOD (ORDINARY)	1/4"
	1/2"
	3/4"
LOCAL PLYWOOD (MARINE)	1/4"
	1/2"
	3/4"

GYPSUM BOARD



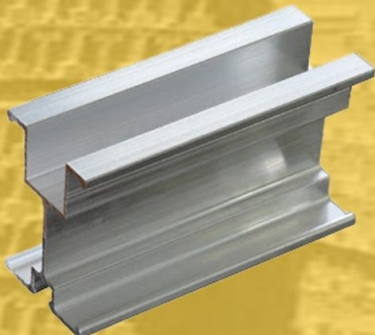
9MM
12MM

FICEM BOARD



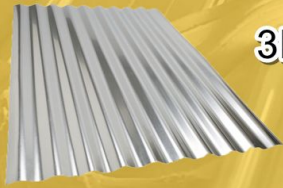
3/16" 3.5MM
1/4" 4.5MM

ALUMA BEAM



75MM X 122MM X 6M
75MM X 140MM X 6M
85MM X 122MM X 6M

CORRUGATED GALVANIZED & COLORED



3FEET .4MM
.5MM



3FEET .4MM
.5MM

RIBTYPE LONGSPAN COLORED



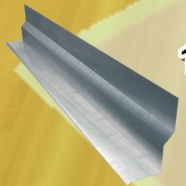
4FEET .4MM
.5MM

INSULLATION



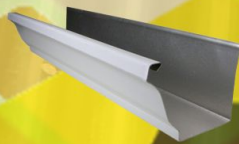
SINGLE FACE 5MM
10MM
DOUBLE FACE 5MM
10MM

FLASHING



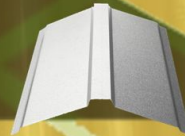
16"

GUTTER



16"

RIDROLL



16"

WALL ANGLE



.6MM

BLIND RIVET



1/2X1/8
3/4X1/8

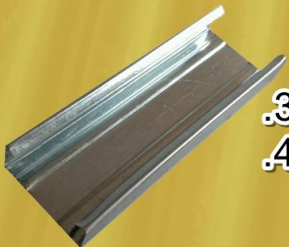
W-CLIP



COMMON & CONCRETE NAIL

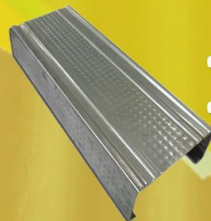


METAL FURRING



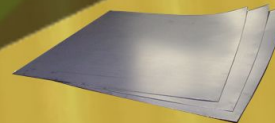
.35MM
.45MM

METAL STUD



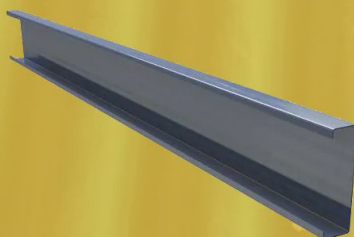
.4MM
.5MM

PLAIN SHEET



4X8"

C-PURLIN



2X3	6.5KG	1MM
	8KG	1.2MM
	9.7KG	1.5MM
2X4	8KG	1MM
	9.5KG	1.2MM
	11.41KG	1.5MM
2X6	9.5KG	1MM
	12KG	1.2MM
	14.27KG	1.5MM



JACE'S CONSTRUCTION MATERIALS TRADING

ABOUT US

Jace's Construction Materials Trading one of the top suppliers specialized in scaffolding and provides integrated services to the construction industry solutions in the field of formwork scaffolding equipment and building materials. The company has seen since its inception in 2018 until now great development and at all levels. The company offers the best equipment and formwork, scaffolding, offer for sale and rent. It also provides always strives to serve its customers so as to ensure their access to the most powerful and best safe solutions.



JCMT WAREHOUSE #66 Karuhatan Rd.,
Gen T. De Leon, Valenzuela City, Philippines 1442
Contact Nos.: +63956 133 6365 / +63947 814 5863
Email Add.: info@jacescmt.com
alvinsegundo@jacescmt.com
Website: www.jacescmt.com
Telephone Nos.: (02) 7257 1246



fb.me/jacescmt